

Willo-Hill Baptist Church

**Missionary
Care Support
Teams**

May, 2000

Willo-Hill Missionary Care Teams

“You will do well to send them on their way in a manner worthy of God. It was for the sake of the Name that they went out, receiving no help from the pagans. We ought, therefore, to show hospitality to such men so that we may work together for the truth.” 3 John 6b-8

In the past few years, Willo-Hill has been learning more and more what it means to be a sending church, one which sends our missionaries out in a manner worthy of God because they are going out for the sake of the Name. They are going out to champion the Name of God in places where God’s Name is unknown or horribly neglected. If we love God’s glory, His Name, then we will love to see the fame of His Name spread to every unreached people. And those who go out from us for the sake of the Name will, therefore, be seriously and substantially supported by those of us who stay behind. For isn’t the reason we are staying behind also for the sake of the Name, not for the sake of comfort or convenience or money or any private ambitions?

To that end, the Missions Leadership Team requires that all missionaries sent out from WHBC have a Willo-Hill-based missionary care team. In this way we hope to more fully meet the needs of our missionaries and to be active fellow workers with them in the truth.

What is a Care Team?

A Care Team is a small group (6-12) of committed people who come together to care for their missionary in a variety of ways, striving to help meet their personal, emotional, and spiritual needs. It is a group of people with whom the missionary can be open and honest, allowing them to see his/her needs and share in his/her successes and defeats.

Why have a Care Team?

Because Care Teams help to make our missionaries feel understood, and by providing them with a committed group of people who will show them practical love, keep them visible before the rest of the Willo-Hill family and strengthened on the mission field.

What does a Care Team do?

In a nutshell, a Care Team works together to care for their missionary, striving to meet their spiritual, physical, and emotional needs. To a large extent, this will happen only to the degree that the missionary is willing and able to make his/her needs known to the Team.

The specific ways in which a Care Team goes about meeting their missionary’s needs will vary depending on the specific personality and needs of the missionary, as well as the personality (creativity) of the Care Team. Ask your missionary how you can best assist him/her; learn from the example of other teams; be creative; pray about it.

This doesn’t mean that the Care Team does everything, but they do take personal responsibility to serve as that missionary’s advocate at Willo-Hill.

Minimally, every Care Team member should make a commitment to:

1. A specific term length. Commit to being on the Team for at least one year or preferably one mission term.
2. Meet together on a regular basis, about once a quarter, to pray corporately for the missionary, his/her ministry, and the people to whom he/she is ministering.
 - The Care Support Team is to establish a prayer chain, which will enable Team members to pray for the missionary, the ministry, and the people as urgent requests become known.
 - Team members will be also asked to pray individually for the missionary, preferably daily.
3. Correspond regularly with your missionary, including sending birthday, anniversary, and holiday cards and general notes of encouragement.
4. Work to create an atmosphere where your missionary feels safe and comfortable to share himself/herself very personally with the team – keeping confidential concerns confidential.
5. The Care Support Team is to be the first line of hospitality for the missionary when they are in the area. They will be called upon to help provide housing, meals, transportation, and other needs, as well as being available to help the missionary in his/her re-entry to the area and the church.
6. Be available to provide practical care for your missionary.

How are Care Teams formed?

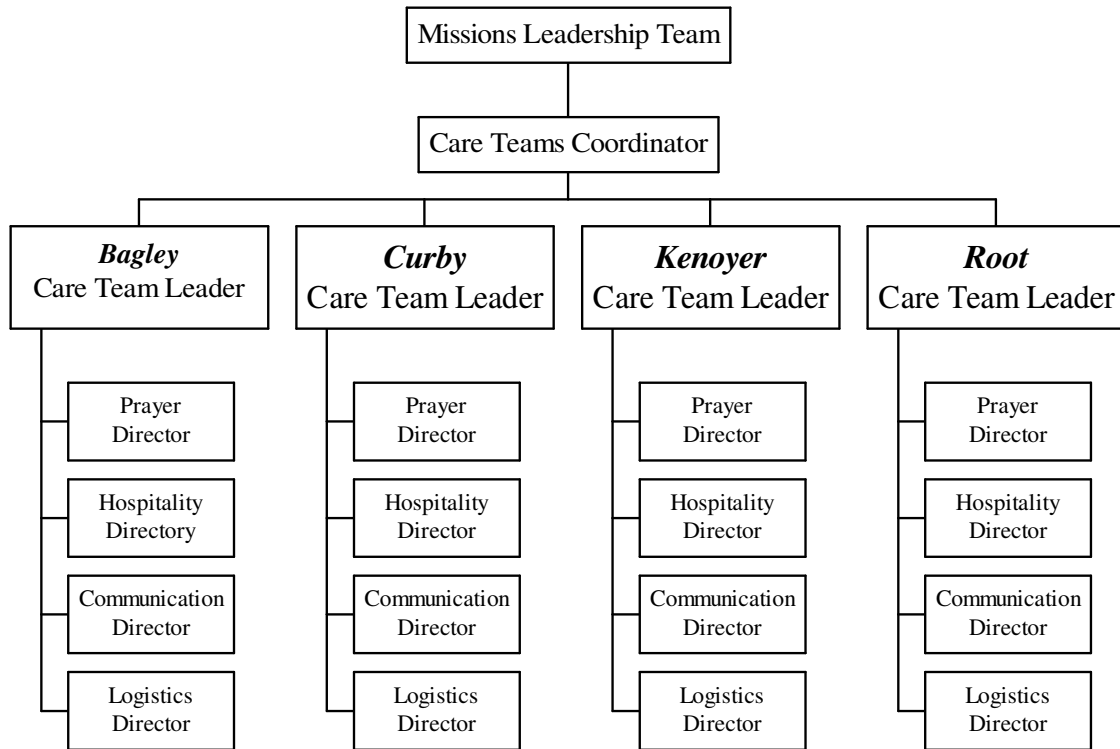
Members of a Care Team are prayerfully chosen by the individual missionary and the Missions Leadership Team. Some missionaries ask friends from their small groups, ABFs, various ministry involvements, etc. to come together to form their Care Team. The key for the missionary is to choose people with whom they have already established a level of trust and with whom they can be “real”. The leader/directors in the Care Teams must be members of Willo-Hill.

Why does the Willo-Hill Missions Leadership Team require Care Teams?

Missionaries don't go out for adventure, they don't go out for prestige, nor do they go out merely for humanitarian purposes; they do go out for the sake of the Name. We want the missionaries that we financially support to deeply feel that they are genuinely cared for, that they are more than just names on our missionary list or line items in our budget.

Willo-Hill doesn't just want to “have” missionaries; we want to “send” missionaries in a manner worthy of the Name. How can this happen? The Missions Leadership Team is responsible for over 35 missionary families. Pastor Brad Winkler cannot completely “care” for all these people. The nine plus people on the MLT cannot make this massive task happen either. We believe the Missionary Care Teams will prove to be an essential part of the missions enterprise at Willo-Hill.

Care Teams Organization



Care Team Coordinator

Job Description & Responsibilities:

1. Liaison between the Missions Leadership Team and the Care Team Leaders.
2. Contact person for the congregation and those outside our church seeking information regarding our missionaries.
3. Make sure each Care Team Leader is meeting regularly with his/her team and that they are fulfilling their team responsibilities.

Qualifications:

1. Church member.
2. Mission-minded and willing to be current in their understanding of all the missionaries.
3. Must understand and support Willo-Hill's missions policy.

Care Team Leader

Job Description:

1. Lead the Team in the care of the missionary of that team, making sure the support of the church for the missionary is effective.
2. Reports to the Care Team Coordinator.

Specific Responsibilities:

1. To be well informed about the missionaries, his/her family, ministry, and field.
2. To have the Team meet regularly to pray for their missionary and discuss information and needs regarding their missionary.
3. To oversee and coordinate the Team's directors of prayer, hospitality, communication, and logistics.
4. To make prayer meetings available to the congregation.
5. To encourage spiritual growth:
 - a. Before the missionary(ies) go
 - b. While the missionary(ies) are on the field
 - c. When the missionary(ies) return home

Qualifications:

1. Church member.
2. Mission-minded and willing to be current in their understanding of all the missionaries.
3. Must understand and support Willo-Hill's missions policy.

Prayer Director

Job Description:

1. To communicate regularly and effectively the prayer requests and praises of the missionary to the Care Support Team and to the church.

Specific Responsibilities:

1. To keep the Care Support Team informed of the missionary's prayer requests and praises via the Team's prayer chain.
2. To communicate any specific or urgent prayer requests to the following:
 - a. Ministries Pastor
 - b. Office staff

- c. Congregation (prayer ministry, WWAM)
 - d. Other supporting churches, if needed
3. To communicate any prayer requests of the Care Support Team's members to the missionary.
4. Attend meetings with entire Team as called by the Care Team Leader.
5. To encourage spiritual growth:
 - a. Before the missionary(ies) go
 - b. While the missionary(ies) are on the field
 - c. When the missionary(ies) return home

Qualifications:

1. Church member.
2. Mission-minded and willing to be current in their understanding of all the missionaries.
3. Must understand and support Willo-Hill's missions policy.

Hospitality Director

Job Description:

1. To oversee the hospitality needs of the missionary of the Care Support Team.

Specific Responsibilities:

1. To help the missionary arrange adequate housing, lodging, meals, and transportation for their stay in the area. This is done first through the help of the members of the Care Support Team and then through the Missions Team Coordinator.
2. If the missionary is staying in the area for an extended time period, help them set up housekeeping, provide groceries, provide a car, etc.
3. To aid the missionary in their re-entry, if needed, and to escort/guide them around Willo-Hill, acquainting them with the church staff, the church facilities, the church activities, as well as re-acquainting them with the area.
4. Attend meetings with entire Team as called by the Care Team Leader.
5. To encourage spiritual growth:
 - a. Before the missionary(ies) go
 - b. While the missionary(ies) are on the field
 - c. When the missionary(ies) return home

Qualifications:

1. Church member.
2. Mission-minded and willing to be current in their understanding of all the missionaries.
3. Must understand and support Willo-Hill's missions policy.

Communication Director

Job Description:

1. To communicate regularly and effectively with the missionary and relay information to the Care Support Team as well as the congregation at Willo-Hill.

Specific Responsibilities:

1. To keep the Care Support Team informed of and send cards for the missionary's (ies') birthday, anniversary, and other special occasions.
2. To make sure that letters and cards of encouragement are going out to their missionary.
3. To handle the sending of care packages when desired. However, no one on the Team should feel under obligation to give to finance the care package (there are no fees or dues to be associated with being on a Care Support Team).
4. To work with the Prayer Director in communicating with the missionary for updated prayer requests and praises.
5. Attend meetings with entire Team as called by the Care Team Leader.
6. To encourage spiritual growth:
 - a. Before the missionary(ies) go
 - b. While the missionary(ies) are on the field
 - c. When the missionary(ies) return home

Qualifications:

1. Church member.
2. Mission-minded and willing to be current in their understanding of all the missionaries.
3. Must understand and support Willo-Hill's missions policy.

Logistics Director

Job Description:

1. To handle the “nuts and bolts” of the missionary’s on-going home responsibilities and needs while the missionary is away on the field.

Specific Responsibilities:

1. This could include but not be limited to:
 - a. Managing business affairs
 - Money
 - Taxes
 - Health
 - Death
 - b. Attending to personal details
 - Material goods
 - Family matter
 - Ministry needs
2. Attend meetings with entire Team as called by the Care Team Leader.
3. To encourage spiritual growth:
 - a. Before the missionary(ies) go
 - b. While the missionary(ies) are on the field
 - c. When the missionary(ies) return home

Qualifications:

1. Church member.
2. Mission-minded and willing to be current in their understanding of all the missionaries.
3. Must understand and support Willo-Hill’s missions policy.

Practical Ideas for Caring for Your Missionary

Before they go . . .

- Pray earnestly for them.
- Help them to find information about the country they are going to and the people they will be working among by going to the library, reading missions periodicals, keeping an eye out for articles in the daily paper.
- Be available for them. Encourage them as their emotions vary just before they go.
- Help them find information on needed equipment by reading Consumer Report articles, discussing with others, etc.
- Ask them about what they are learning as God takes them down the path that will lead them to a foreign country.
- Help them to get all the supplies tht they need to take with them overseas. You can help them by running errands or offering to take care of their children so that they can more easily run errands.
- Mail out their prayer letters.
- Drop dinner off at their house their last few nights so that they can concentrate on accomplishing those last few tasks.
- Offer to have them stay with you if they need a place just before they leave.
- Help them pack the items they'll store here in the U.S. as well as the items they'll take with them or ship.
- Treat them to something special just before they go.
- Take them to the airport as a Team and have a send off there.
- Have an open house before they leave so they can say good bye to many of their friends.
- Host a reception for them at WHBC after their commissioning.

While they are gone . . .

- Pray earnestly for them.
- Write to your missionary often.
- Keep up to date with what your missionary is doing so that you can encourage them in the work and share their work with the WHBC family.
- Remember their birthdays, holidays, and other special days with a card, gift, fax, or telephone call.
- Send a fax, if possible, to them occasionally so that they have current, up-to-date information on their Team.

- Pass on any special prayer requests to the church office so that the pastoral staff knows how to pray and so that it can be shared during the regularly scheduled WHBC prayer meeting times.
- Send fun “care packages” occasionally to encourage our missionary or to help meet some of their needs.
- Send your missionary the Sunday morning sermon tapes so that they can continue to learn from the church and feel more a part of the body (send the complete worship service!)
- Send your missionary articles of special interest out of the newspaper or magazines.
- Give your missionary a subscription to a magazine like “Time” or “Newsweek” so that they can keep up with what is happening in the U.S.
- Share your prayer requests and concerns with your missionary; they want to pray for you.
- Consider visiting your missionary on the field.
- Send them a good book you’ve especially appreciated.
- Mail out their prayer letters for them.
- Send them a note to remind them you’re praying.
- Help to take care of your missionary’s(ies’) while they’re away.
- Send a “day-brightener” that will fit into an envelope with your letter to them (e.g., herbal tea bags, perfume samples, bookmarks, a recipe, a cartoon, a seasoning or soup packet, hair ribbons, fancy shoe laces, stickers, baseball cards, sticks of gum, etc.).

When they return . . .

- Pray earnestly for them.
- Be at the airport to welcome them back home.
- Host an open house so that they can see many of their friends and update them.
- Help them to organize a time at WHBC where they can show their slides and update the body.
- Praise the Lord with them for how God used them overseas.
- Have housing ready for them when they arrive home.
- Have a few groceries for them in their refrigerator and cupboards so that they don’t have to go shopping right away.
- Help them find a car to borrow during their furlough time.
- Give them a special night out or some other special treat.
- Help them to catch up with what is current, what’s in and what’s out.
- Bring dinner by their house for the first few days.

- Introduce them to new people at WHBC.
- Help them to get caught up on the latest happenings here at WHBC.
- Give them space.
- A month before they come back begin keeping a calendar for them, setting up times when people can see them so that they aren't so overwhelmed when they return.
- Contact ABF classes and small groups regarding possible speaking times.